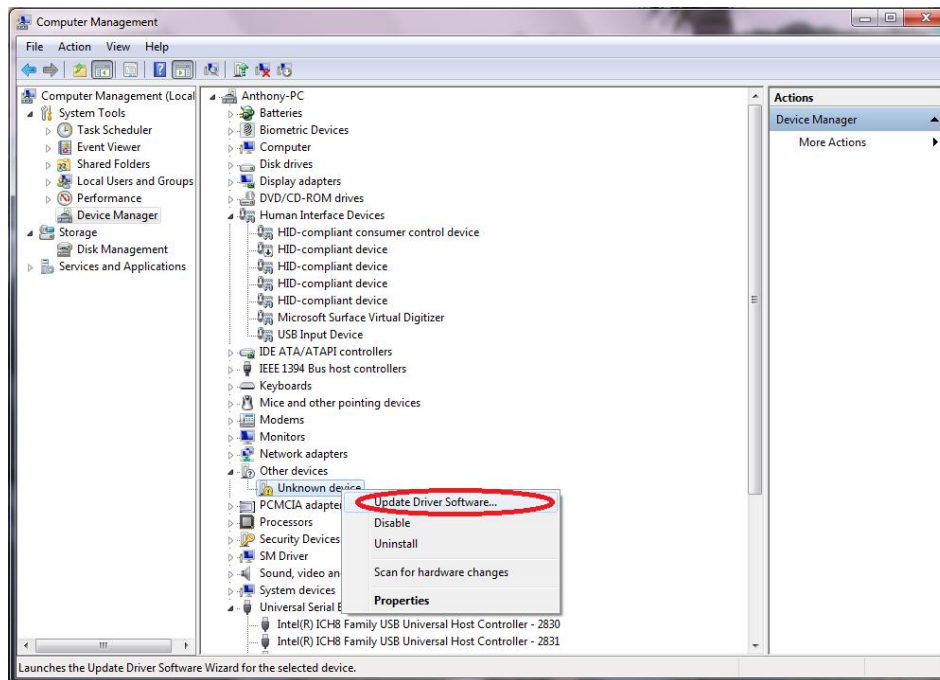
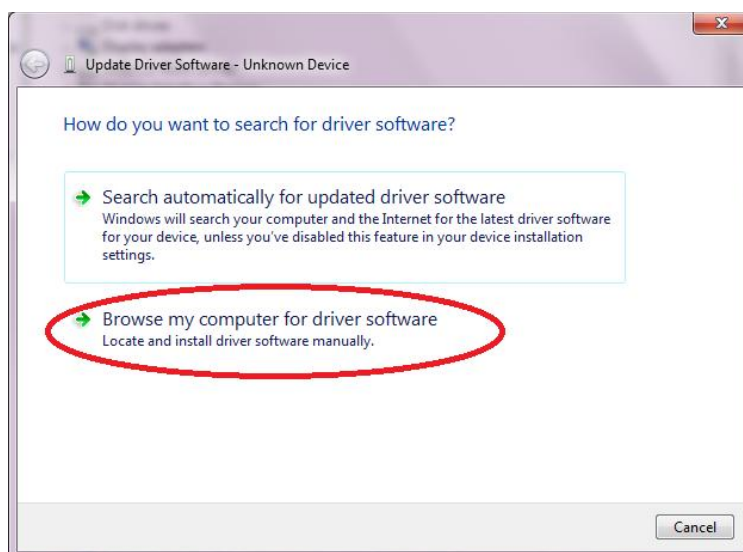


Window 7 and Window Vista 64bit

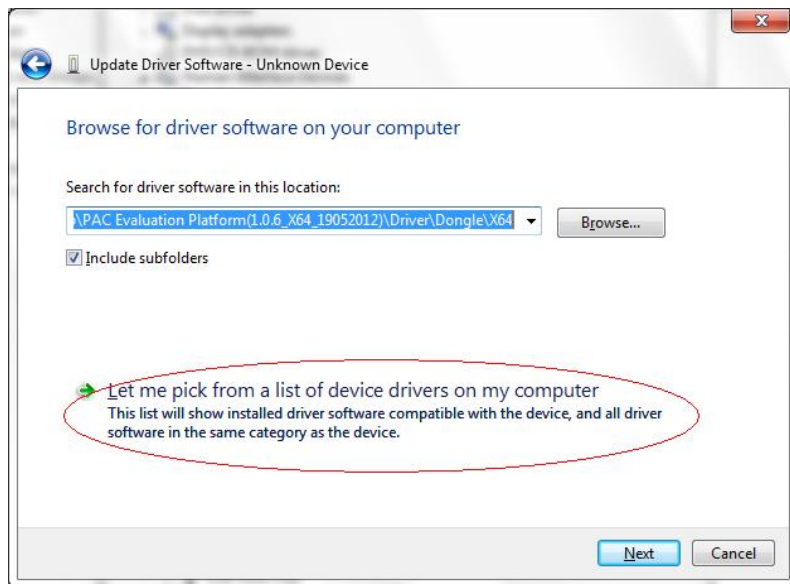
In the first time, Dongle plug in, the system will not recognise it's driver. Device Management will appear as below:



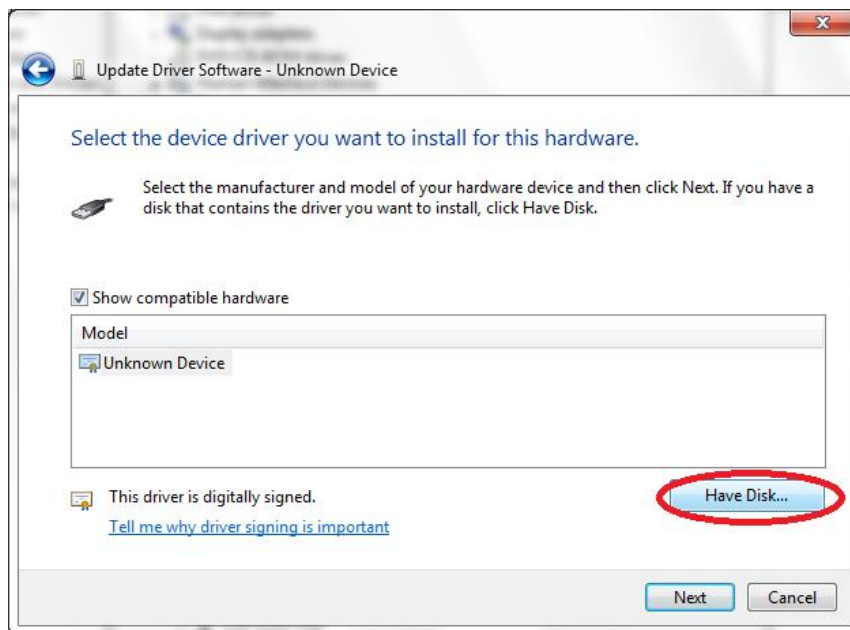
Right click on **Unknown device** and choose **Update Driver Software...**



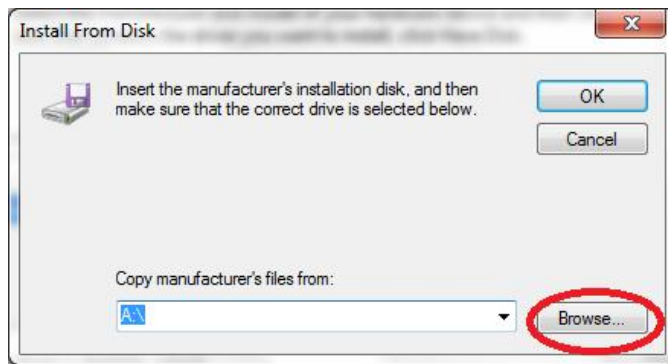
In window appear, choose **Browse my computer for driver software**



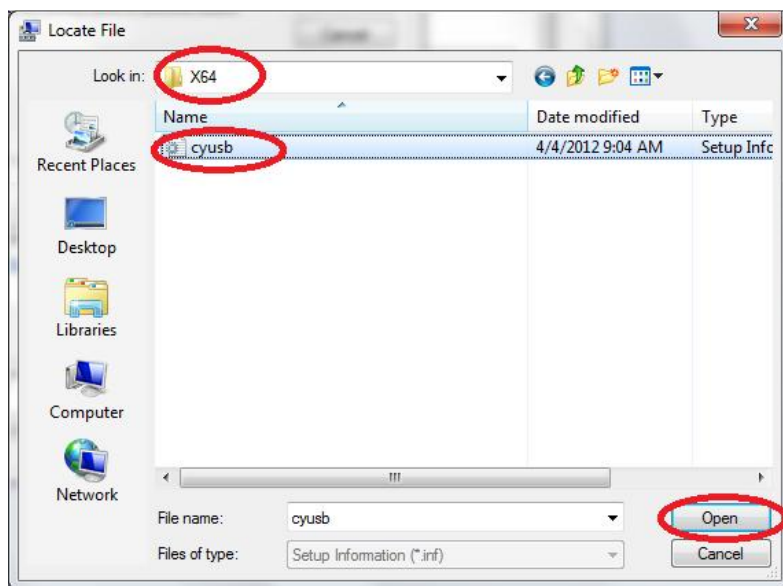
Click on **Let me pick from a list of device drivers on my computer** button. A new window appears as below picture:



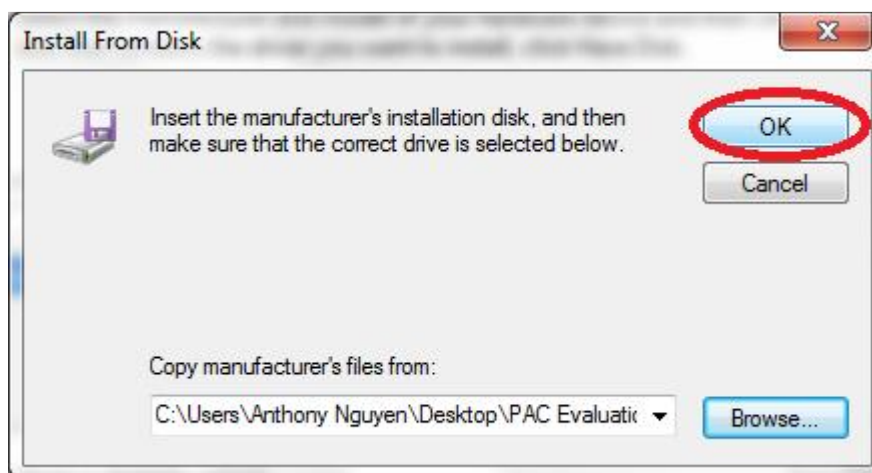
Click on **Have Disk** button to select driver



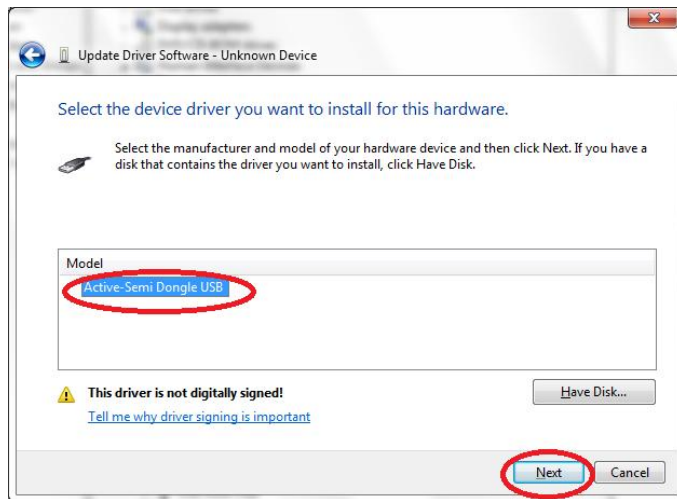
Click on **Browse..** button to select **cyusb.inf** file in **../ Driver/X64** folder



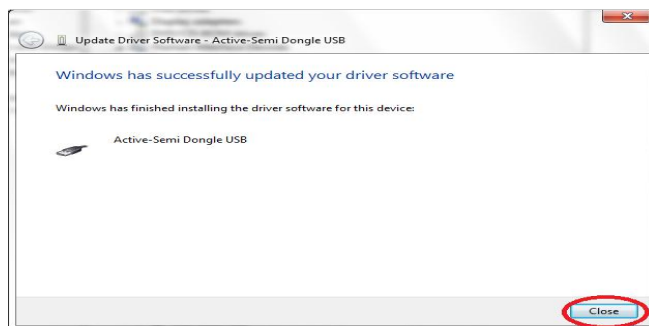
Click on **Open** button to continue



Click on **OK** button to confirm the selected driver



Click on **Active-semi Dongle USB** and then click **Next** button to start installing the driver



Click **Close** button to complete. Device Management will have the below result:

